

Shade  
matching  
just got  
simpler.

## 3M™ Filtek™ Easy Match Universal Restorative

- ▶ Intuitive Shade Selection
- ▶ Naturally-Adaptive Opacity
- ▶ Reduced Inventory



Request a demo





# Part of the 3M™ Filtek™ Dental Restorative family

Trusted for more than  
50 years. 2 billion  
restorations – and counting.



Powered by our **TRUE** nanotechnology, 3M™ Filtek™ Dental Restoratives have helped clinicians around the world create over 2 billion restorations. The Filtek family gives you the options you need for virtually any clinical situation: from anterior to posterior, high-end aesthetics to highly efficient procedures, and everything in between. Whether you need a universal, flowable or bulk-fill composite, anterior or posterior, the Filtek family gives you aesthetic and efficient solutions.

“I really like Filtek Easy Match Universal Restorative. The composite handles very well and polishes very nicely. The simplified shade system yields very nice results without layering.”

– Dr. Nick Marongiu  
La Jolla, CA, USA



Excellent polish  
retention



Excellent strength  
and wear resistance



Firm  
handling



Safe for composite  
warming and  
injection molding<sup>1</sup>

1. Warm capsules up to 70°C for up to 1 hour.

# 3M™ Filtek™ Easy Match Universal Restorative

**Bright. Natural. Warm.** Just 3 shades deliver an excellent match to almost any patient's smile. That means a simpler workflow for single-shade restorations – with natural-looking results to make your patients proud.

3M™ Filtek™ Easy Match Universal Restorative is a streamlined system built on clinically proven nanotechnology, a hallmark of the globally trusted family of 3M™ Filtek™ Dental Restoratives. It simplifies shade matching by allowing you to go from observation to selection, quickly and intuitively.

Anterior or posterior. Without a blocker – and without sacrificing opacity.

## Simple. Easy. Intuitive.

- ✓ Just 3 shades: Bright, Natural, Warm
- ✓ No complicated shade guide
- ✓ No blocker required

## Simplicity without sacrifice.

Some simplified shading systems come with aesthetic drawbacks. Filtek Easy Match Universal Restorative both delivers an excellent shade match and blends with surrounding dentition, for natural-looking smiles.



"Filtek Easy Match provides a simple solution for everyday restorations. Streamline your inventory and deliver restorations that disappear!"

– Dr. Thomas Giacobbi  
Chandler, AZ, USA

# Shade selection is intuitive and straight forward:


**Chroma**, or colour intensity, is only one of the components leading to a great shade match. Even a composite of the “right colour” can stand out from surrounding dentition if its **value** (relative lightness/darkness) or **opacity** is not a good match as well.

Together, the 3 shades of 3M™ Filtek™ Easy Match Universal Restorative cover the VITA classical shades – no blocker needed.

“Filtek Easy Match Universal Restorative simplifies shade matching and allows very aesthetic restorations in a more streamlined approach.”

– Dr. Augusto Robles  
Anniston, AL, USA

**Bright**



Representative example of Bright tooth shade.


– CHROMA +

– VALUE +



**Bright:** low chroma, high value

**Natural**



Representative example of Natural tooth shade.


– CHROMA +

– VALUE +



**Natural:** balanced, mid-range chroma and value

**Warm**



Representative example of Warm tooth shade.

– CHROMA +

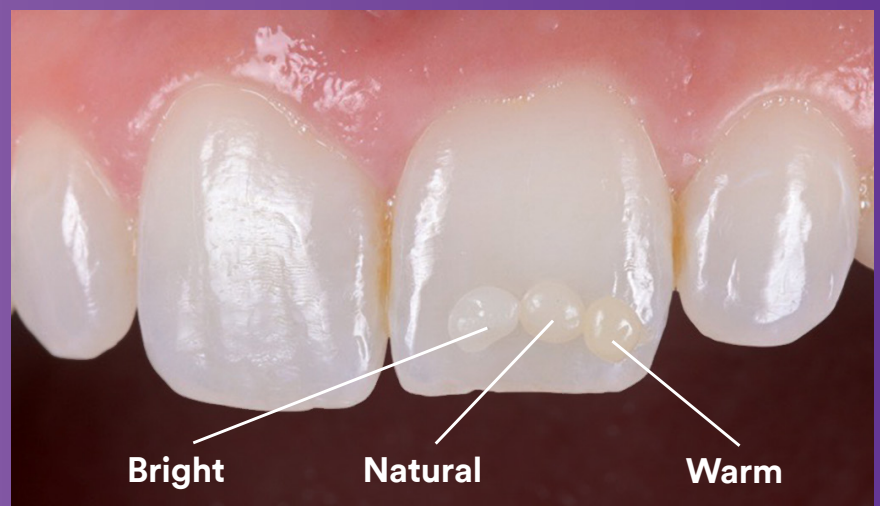
– VALUE +



**Warm:** high chroma, low value

## Primary benefits you'll love

- Excellent shade match for most anterior and posterior restorations
- Quick, easy and intuitive shade selection without sacrificing opacity
- Simplified single-layer restorations, with no blocker needed
- Streamlined inventory helps reduce waste of infrequently used shades
- Firm handling
- Suitable for composite warming, which lowers extrusion force<sup>1</sup> without changing physical properties<sup>2</sup>



Courtesy of Dr. Brian Baliwas

1. Internal Data

2. When warmed according to our IFU (capsules: up to 70°C for up to 1 hour)

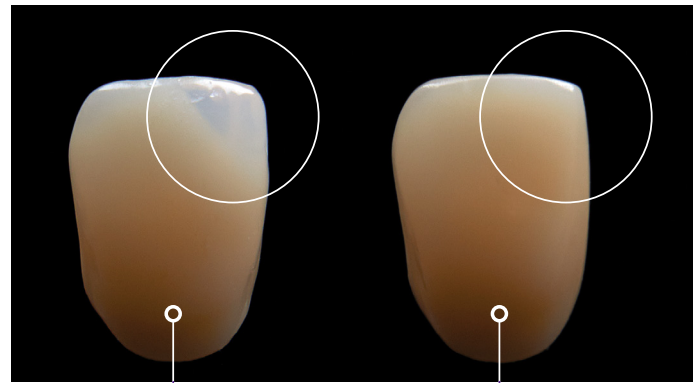


# How does it work?

## With the power of naturally-adaptive opacity.

Unlike some single-shade systems, 3M™ Filtek™ Easy Match Universal Restorative doesn't need a blocker to mask the darkness of the oral cavity in anterior restorations. Its naturally-adaptive opacity delivers Enamel-like translucency at thicknesses of 0.5 to 1 mm – exactly where you need it for the bevel and incisal edge. In thicknesses  $\geq 2$  mm everywhere else, it delivers a Dentine-like opacity.

All composites become more translucent when applied in thinner layers. But the naturally-adaptive opacity of Filtek Easy Match Universal Restorative is optimally aligned with both dentine and enamel, helping it blend with surrounding tooth structure and delivering a natural look.

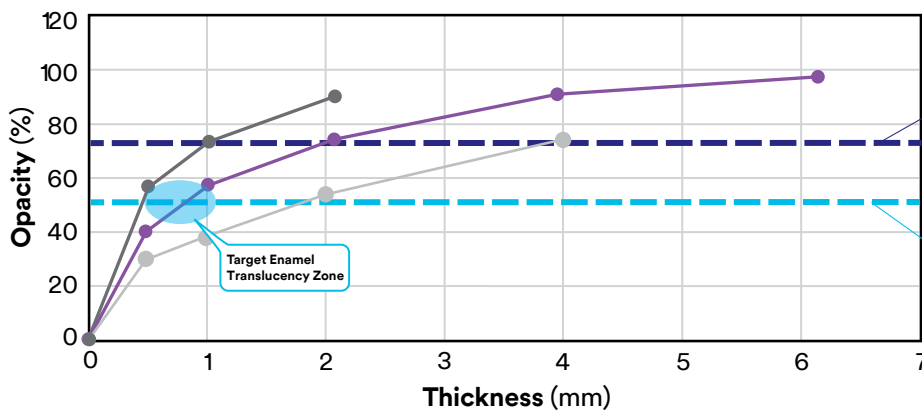


Competitor Composite

No blocker used

3M™ Filtek™ Easy Match Universal Restorative, Natural Shade

No blocker needed



**Dentine Value**  
3M™ Filtek™ Easy Match shows Dentine-like opacity at thicknesses  $\geq 2$  mm

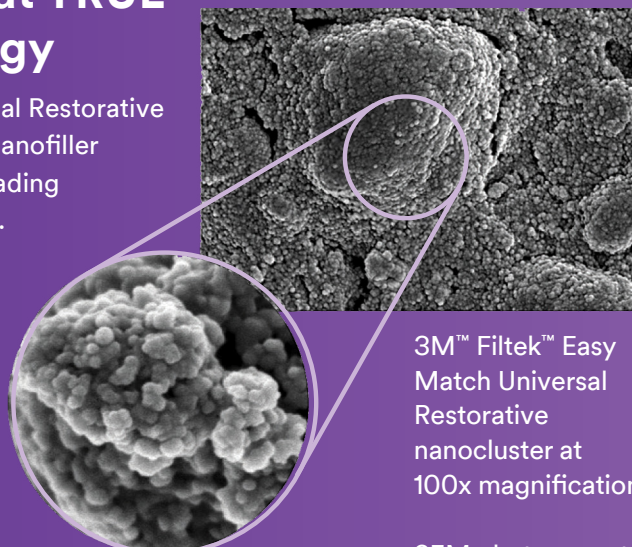
**Enamel Value**  
3M™ Filtek™ Easy Match shows Enamel-like translucency at thicknesses of 0.5 - 1 mm

Source: Internal Data\*

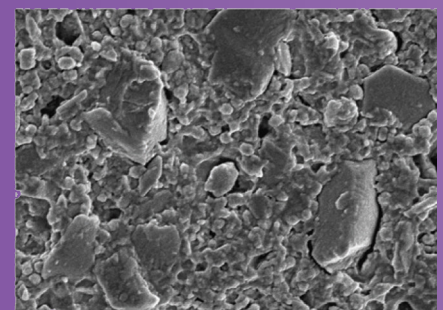
— 3M™ Filtek™ Supreme XTE Universal Restorative A2-D    — Competitor Composite (no blocker used)  
— 3M™ Filtek™ Easy Match Universal Restorative

## A closer look at TRUE nanotechnology

Filtek Easy Match Universal Restorative features the same **TRUE** nanofiller technology used in our leading Filtek Dental Restoratives. The unique nanoclusters enable excellent wear resistance and help the composite retain a smooth gloss.



3M™ Filtek™ Easy Match Universal Restorative nanocluster at 100x magnification



Leading competitive composite

SEM photos courtesy of Dr. J. Perdigao, University of Minnesota.



### 3M™ Filtek™ Easy Match Universal Restorative – Bright

Item #	Product Information
6110B	(20) Capsules, 0.2 g/each
6120B	(1) Syringe, 4 g/each



### 3M™ Filtek™ Easy Match Universal Restorative – Natural

Item #	Product Information
6110N	(20) Capsules, 0.2 g/each
6120N	(1) Syringe, 4 g/each



### 3M™ Filtek™ Easy Match Universal Restorative – Warm

Item #	Product Information
6110W	(20) Capsules, 0.2 g/each
6120W	(1) Syringe, 4 g/each

### 3M™ Filtek™ Easy Match Universal Restorative – Intro Kits

Item #	Product Information
6110K	(60) Capsules, 0.2 g/each: 20 each of shades Bright, Natural, and Warm
6120K	(3) Syringes, 4 g/each: 1 each of shades Bright, Natural, and Warm

### 3M™ Filtek™ Easy Match Universal Restorative – Value Packs

Item #	Product Information
6110	(100) Capsules, 0.2 g/each: Natural shade only
6120	(5) Syringes, 4 g/each: Natural shade only



Request a demo



**Australia** | KCI Medical Australia Pty Ltd, Level 3, Building A, 1 Rivett Road, North Ryde NSW, AU 2113

**New Zealand** | KCI New Zealand Unlimited, Suite 1701, Level 17, PwC Tower, 15 Customs Street West, Auckland Central, Auckland 1010.

Exclusively for Dental Professionals: This product is intended for professional use only. Please always follow the Product Instructions for Use (IFU).

© Solventum 2024. Solventum, the S logo and Filtek are trademarks of Solventum or its affiliates. 3M and the 3M logo are trademarks of 3M.

Other trademarks are property of their respective owners.